

QUANTIS DYNAMIC EQUITY is a quantitative Long/Short Equity Fund with an exposure on large US stocks.

Its objective is to profit from the generally observed appreciation of stocks over a long period of time and to be protected in case of severe corrections of the stock markets.

Depending on market configurations, the fund may either enhance long positions, hedge the exposure by using short selling or equity futures, or even use short term oriented active trading techniques.

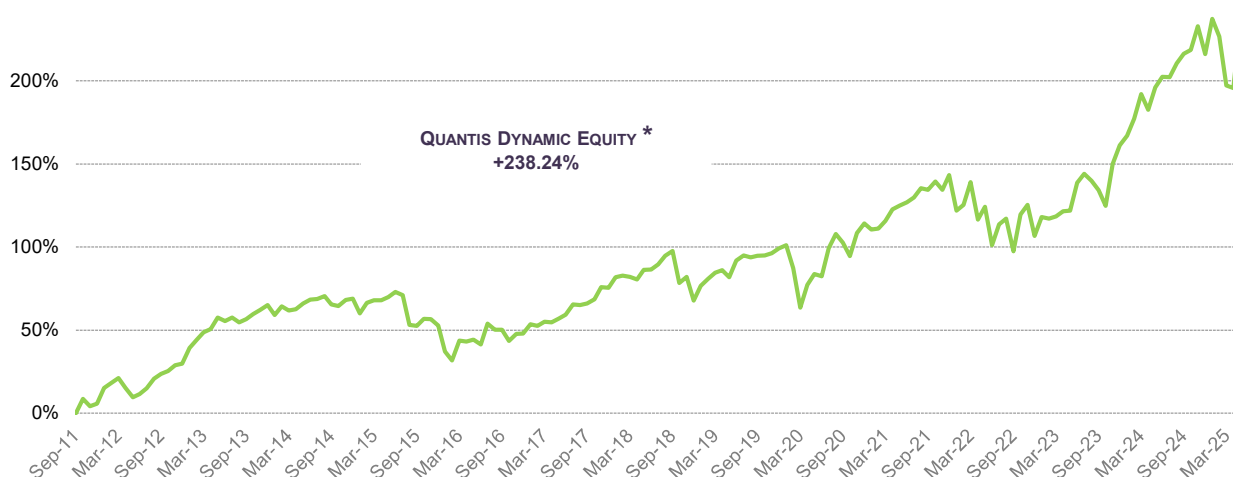
The fund was converted to a Luxembourg domiciled UCITS on March 23rd, 2015. From October 2011 to March 2015, QUANTIS DYNAMIC EQUITY was called PFM DYNAMIC EQUITY and was under Cayman jurisdiction.

## INVESTMENT PROCESS

The investment process is fully modelised and implemented systematically. Trading models are supported by 3 strategies:

- The first one (40%) is focused on the selection of individual stocks which tend to outperform their benchmark on the long term. This selection model is based on seasonal behavior. Beside this pure quantitative model a manual screening is processed to avoid special situations where statistics do not apply. This strategy manages a portfolio of 20 stocks and is Long only.
- The second one (40%) is a combination of technical indicators and seasonal behavior analyses which result in a more precise market timer : for any single stock this model indicates either a bullish, neutral or bearish middle term indication. This strategy manages a portfolio of 15 stocks and is Long/Short.
- The third one (20%) tends to take advantage from the short term fluctuations of the stock markets (Overlay strategy). It should deliver its best performance in volatile market phases which generally appear during bear markets.
- Average leverage is below 1
- Maximum leverage is always below 2

## HISTORICAL PERFORMANCE (NET RETURN TO INVESTORS) (USD class)



\* From October 2011 to March 2015 : PFM Dynamic Equity (Cayman). As of 23 March 2015 : Quantis Dynamic Equity (Luxembourg UCITS IV)

## PERFORMANCE STATISTIC

|                                  |         |                           |      |
|----------------------------------|---------|---------------------------|------|
| Return since inception           | 238.24% | Maximum possible leverage | 2.00 |
| Annualized return                | 9.33%   | % of positive months      | 68%  |
| Annualized volatility            | 15.09%  | Sharpe ratio              | 0.49 |
| Worst draw down (peak-to-valley) | -23.84% | Calmar ratio              | 0.31 |
| Average Exposure                 | 0.95    |                           |      |

Source : Active Niche Funds

## GMP - QUANTIS DYNAMIC EQUITY - GENERAL INFORMATION

|                      |  |                                 |                             |
|----------------------|--|---------------------------------|-----------------------------|
| Umbrella             | Global Managers Platform (SICAV UCITS V)             | Investment management company   | Active Niche Funds SA       |
| Domicile             | Luxembourg   | Advisor                         | Quantis Asset Management SA |
| Available currencies | USD / CHF  | ManCo                           | Altum                       |
| Inception date       | 23 March 2015 (previously under Cayman jurisdiction) | Custodian                       | ING Luxembourg              |
| Minimum investment   | USD 3'000  | Administrative & Transfer Agent | CACEIS                      |
| Cut-off              | Each Thursday 16h00 CET                              | Auditor                         | Deloitte                    |
| NAV calculation      | Weekly (Friday closing)                              | Management fee                  | 1.60%                       |
| ISIN USD class       | LU1196382912 (N° de valeur : 27426658)               | Performance fee                 | 20% HWM                     |
| ISIN CHF class       | LU1196383993 (N° de valeur : 27426639)               | Subscription fee                | Up to 3%                    |
| AUM                  | USD 16.1 M   | Redemption fee                  | None                        |
| PRIIPS KID : 4       | Recommended holding period : 2 years                 | Ongoing charges (C USD)         | 2.51%                       |

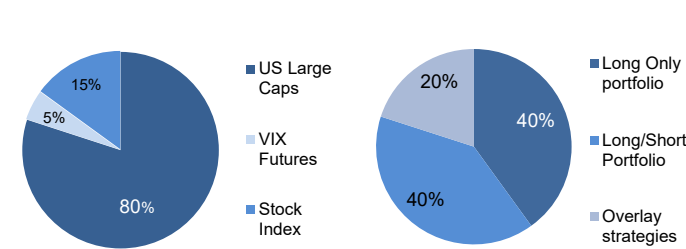
MONTHLY PERFORMANCE (USD class)

|      | JAN     | FEB    | MAR     | APR    | MAY    | JUN     | JUL    | AUG     | SEP    | OCT    | NOV    | DEC    | YEAR    |         |
|------|---------|--------|---------|--------|--------|---------|--------|---------|--------|--------|--------|--------|---------|---------|
| 2025 | 6.65%   | -3.09% | -9.01%  | -0.56% | 14.39% |         |        |         |        |        |        |        | 6.96%   | 238.24% |
| 2024 | 2.27%   | 3.84%  | 5.33%   | -3.22% | 4.77%  | 2.18%   | -0.13% | 2.79%   | 1.87%  | 0.74%  | 4.45%  | -5.01% | 21.13%  | 216.22% |
| 2023 | 5.49%   | -0.44% | 0.53%   | 1.38%  | 0.30%  | 7.49%   | 2.26%  | -1.78%  | -2.28% | -4.05% | 11.26% | 4.40%  | 26.23%  | 161.06% |
| 2022 | -8.80%  | 1.54%  | 6.05%   | -9.37% | 3.53%  | -10.29% | 6.14%  | 1.60%   | -9.01% | 11.23% | 2.69%  | -8.28% | -15.03% | 106.80% |
| 2021 | -1.69%  | 0.18%  | 2.25%   | 3.22%  | 1.02%  | 0.87%   | 1.25%  | 2.46%   | -0.46% | 2.18%  | -2.13% | 3.84%  | 13.58%  | 143.37% |
| 2020 | 0.96%   | -6.88% | -12.69% | 8.35%  | 3.65%  | -0.66%  | 9.29%  | 4.20%   | -2.51% | -3.97% | 7.14%  | 2.80%  | 7.52%   | 114.28% |
| 2019 | 5.27%   | 2.39%  | 2.07%   | 0.85%  | -2.36% | 5.62%   | 1.57%  | -0.53%  | 0.44%  | 0.13%  | 0.68%  | 1.51%  | 18.80%  | 99.30%  |
| 2018 | 3.60%   | 0.51%  | -0.45%  | -0.82% | 3.27%  | 0.07%   | 1.63%  | 2.76%   | 1.44%  | -9.73% | 2.08%  | -7.87% | -4.45%  | 67.75%  |
| 2017 | 3.79%   | -0.63% | 1.72%   | -0.29% | 1.51%  | 1.45%   | 3.89%  | -0.18%  | 0.50%  | 1.52%  | 4.30%  | -0.11% | 18.74%  | 75.56%  |
| 2016 | -10.28% | -3.94% | 9.06%   | -0.40% | 0.93%  | -2.00%  | 8.78%  | -2.37%  | 0.02%  | -4.48% | 3.01%  | 0.03%  | -3.21%  | 47.85%  |
| 2015 | -5.32%  | 4.03%  | 0.95%   | 0.02%  | 1.15%  | 1.72%   | -1.08% | -10.39% | -0.52% | 2.88%  | -0.09% | -2.51% | -9.57%  | 52.75%  |
| 2014 | -3.70%  | 3.30%  | -1.47%  | 0.49%  | 2.06%  | 1.42%   | 0.22%  | 1.07%   | -2.99% | -0.56% | 2.23%  | 0.48%  | 2.32%   | 68.92%  |
| 2013 | 7.21%   | 3.52%  | 3.28%   | 1.22%  | 4.74%  | -1.48%  | 1.40%  | -1.83%  | 1.21%  | 2.01%  | 1.57%  | 1.79%  | 27.22%  | 65.09%  |
| 2012 | 8.86%   | 2.73%  | 2.40%   | -4.89% | -4.98% | 1.87%   | 3.12%  | 5.03%   | 2.42%  | 1.40%  | 2.68%  | 0.80%  | 22.72%  | 29.76%  |
| 2011 |         |        |         |        |        |         |        |         |        | 8.45%  | -3.97% | 1.52%  | 5.74%   | 5.74%   |

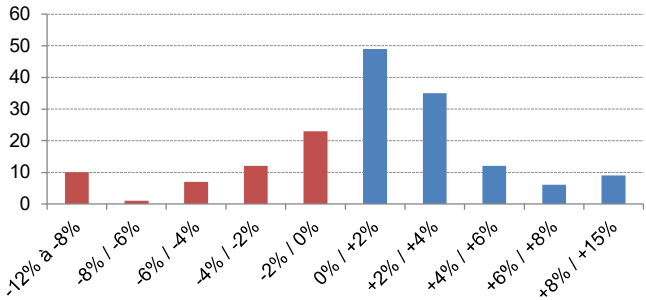
\* From October 2011 to March 2015 : PFM Dynamic Equity (Cayman). As of 23 March 2015 : Quantis Dynamic Equity (Luxembourg UCITS IV)

\* Source : Active Niche Funds

ALLOCATION



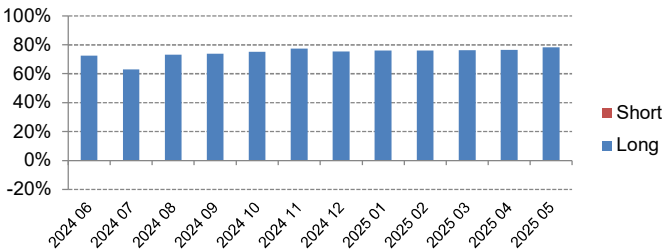
MONTHLY RETURN DISTRIBUTION



TOP EQUITY EXPOSURES (MAY 2025)

| Long             | % NAV  | Short | % NAV |
|------------------|--------|-------|-------|
| Netflix          | 5.69%  | 0     | 0.00% |
| Howmet Aerospace | 5.37%  | 0     | 0.00% |
| GE Aerospace     | 5.06%  | 0     | 0.00% |
| Insulet Corp     | 3.19%  | 0     | 0.00% |
| Costco Wholesale | 3.10%  | 0     | 0.00% |
|                  | 22.41% |       | 0.00% |

NET EXPOSURE (EQUITIES) (last 12 months)<sup>1</sup>



Sustainability

Global Managers Platform – Quantis Dynamic Equity (Quantis Dynamic Equity) is classified as article 6 fund under SFDR.

Article 6 SFDR: Financial product not promoting ESG characteristics nor integrating sustainability risks.

For more information on our ESG Investment Policy and SFDR disclosures: [www.activenf.ch](http://www.activenf.ch)

Important Information

Issued by Active Niche Funds S.A. (ANF), Avenue de Rumine 7, 1005 Lausanne, Switzerland. ANF is authorised and regulated by the FINMA.

This document is a marketing material. Any reference to specific securities, sectors or markets within this document does not constitute investment advice or a recommendation or an offer to buy or sell any security or fund, and is not intended to substitute the offering documents or prospectus of the Fund. This material may not be distributed, published or reproduced in whole or in part. ANF and/or the Management Company of the fund may terminate marketing at any time.

All financial investments involve an element of risk. Therefore, the value of your investment will vary and your initial investment amount cannot be guaranteed. The indicated performance data does not take account of the commissions and costs incurred on the issue and redemption of units. Past performance is not an indication or guarantee for future performances. This product is classified as class 4 out of 7, which is a medium risk class. This rates the potential losses from future performance at a medium level. Poor market conditions could impact your returns.

Investors should understand all characteristics of the Fund's objective before investing and should refer to the prospectus for the funds full list of risks, as well as the KID PRIIPS document for further cost information and the Recommended Holding Period.

The Prospectus, the most recent financial reports and the Key Information Documents, which are available in registered jurisdictions in their respective local language can be found at <https://manco.altumgroup.com/> on the relevant product pages.

Quantis Dynamic Equity Fund is domiciled in Luxembourg. Waystone Fund Services (Switzerland) SA, Av. Villamont 17, 1005 Lausanne, Switzerland. Phone: +41213111777. Internet: [www.waystone.com](http://www.waystone.com) is the Swiss Representative of the Fund where legal documents are also available. The Swiss Paying Agent of the Fund is Banque Cantonale de Genève, 17, quai de l'île, CH-1204 Geneva, Switzerland. Current share prices are available on <https://manco.altumgroup.com/>. For information on investor rights and how to raise complaints please go to [www.activenf.ch/investor-rights](http://www.activenf.ch/investor-rights)