

QUANTIS DYNAMIC EQUITY

Avenue de la Gare 1, 1002 Lausanne, Switzerland
quantisdynamic@activenf.ch +41 21 320 11 06

August 2021: +2.46% YTD 2021: +9.88% Since inception: +135.44% (119 months)

NAV USD : 140.17 NAV CHF : 123.42 (27 August 2021)

QUANTIS DYNAMIC EQUITY is a quantitative Long/Short Equity Fund with an exposure on large US stocks.

Its objective is to profit from the generally observed appreciation of stocks over a long period of time and to be protected in case of severe corrections of the stock markets.

Depending on market configurations, the fund may either enhance long positions, hedge the exposure by using short selling or equity futures, or even use short term oriented active trading techniques.

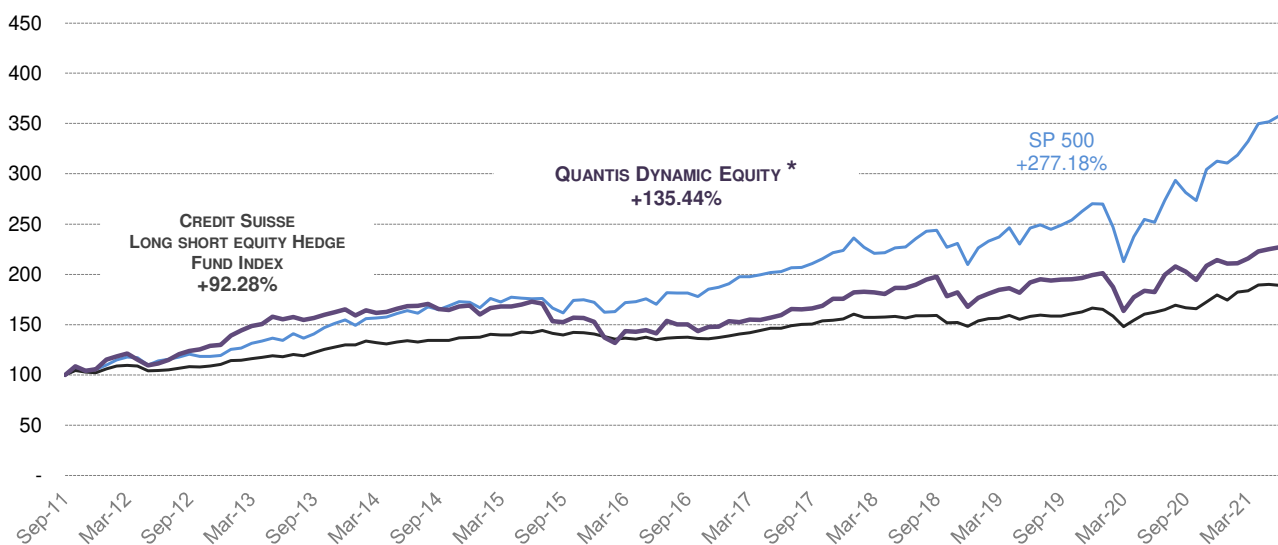
The fund is offered in a UCITS Luxembourg format since March 23, 2015. From October 2011 to March 2015, QUANTIS DYNAMIC EQUITY was called PFM DYNAMIC EQUITY and was under Cayman jurisdiction.

INVESTMENT PROCESS

The investment process is fully modelised and implemented systematically. Trading models are supported by 3 strategies:

- The first one (40%) is focused on the selection of individual stocks which tend to outperform their benchmark on the long term. This selection model is based on seasonal behavior. Beside this pure quantitative model a manual screening is processed to avoid special situations where statistics do not apply. This strategy manages a portfolio of 20 stocks and is Long only.
- The second one (40%) is a combination of technical indicators and seasonal behavior analyses which result in a more precise market timer : for any single stock this model indicates either a bullish, neutral or bearish middle term indication. This strategy manages a portfolio of 15 stocks and is Long/Short.
- The third one (20%) tends to take advantage from the short term fluctuations of the stock markets (Overlay strategy). It should deliver its best performance in volatile market phases which generally appear during bear markets.
- Average leverage is below 1
- Maximum leverage is always below 2

HISTORICAL PERFORMANCE (NET RETURN TO INVESTORS) (USD class)



* From October 2011 to March 2015 : PFM Dynamic Equity (Cayman). As of 23 March 2015 : Quantis Dynamic Equity (Luxembourg UCITS IV)

PERFORMANCE STATISTIC

Return since inception	135.44%	Maximum possible leverage	2.00
Annual average return	13.66%	% of positive months	71%
Annualized volatility	13.20%	Sharpe ratio	1.03
Worst draw down (peak-to-valley)	-23.84%	Calmar ratio	0.57
Average Exposure	0.95		

In Switzerland, the Fund may only be offered or distributed to qualified investors. For this, the Fund has appointed as Swiss Representative Oligo Swiss Fund Services SA, Av. Villamont 17, 1005 Lausanne, Switzerland, Tel: +41 21 311 17 77, email: info@oligofunds.ch. The Fund's paying agent is Banque Cantonale de Genève. Any Fund Documentation may be obtained free of charge from the Swiss Representative in Lausanne.

This document is provided for informational purposes only. It is neither a proposal nor an offer to buy any security or financial instruments referred to therein, nor an investment advice. Before making any investment decision in the financial instruments referred to in this document, it is convenient to refer to the latest version of the Key Investor Information Document (KIID) (available at ACTIVE NICHE FUNDS). Prospective investors are required to take the necessary steps to determine the suitability of their investment in respect of legal, tax and accounting conditions applicable to them. The information contained herein is subject to change without prior notice. Investors are required to ensure that they have the latest version of this document. Past performance does not constitute a guarantee for future performance. Performance data do not take into account commissions or any costs incurred on the issuance or redemption of shares. For further information, contact ACTIVE NICHE FUNDS on the following address quantisdynamic@activenf.ch. This document was published by the investment company ACTIVE NICHE FUNDS - Avenue de la Gare 1, CP 5117, 1002 Lausanne, Switzerland, Tel: +41 21 320 11 05

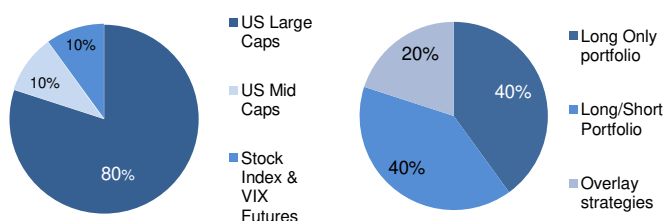
Past performances do not constitute a guarantee for future performances.

MONTHLY PERFORMANCE (USD class)

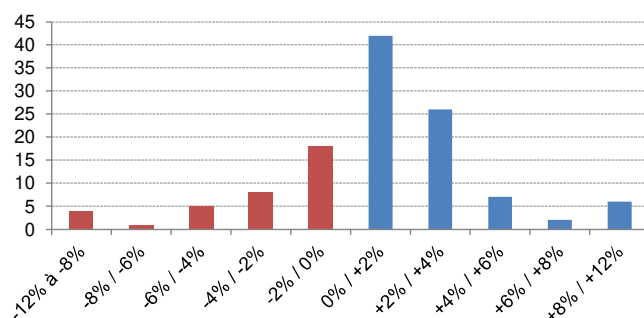
	JAN	FEB	MAR	APR	MAY	JUN	JUL	AUG	SEP	OCT	NOV	DEC	YEAR	
2021	-1.69%	0.18%	2.25%	3.22%	1.02%	0.87%	1.25%	2.46%					9.88%	135.44%
2020	0.96%	-6.88%	-12.69%	8.35%	3.65%	-0.66%	9.29%	4.20%	-2.51%	-3.97%	7.14%	2.80%	7.52%	114.28%
2019	5.27%	2.39%	2.07%	0.85%	-2.36%	5.62%	1.57%	-0.53%	0.44%	0.13%	0.68%	1.51%	18.80%	99.30%
2018	3.60%	0.51%	-0.45%	-0.82%	3.27%	0.07%	1.63%	2.76%	1.44%	-9.73%	2.08%	-7.87%	-4.45%	67.75%
2017	3.79%	-0.63%	1.72%	-0.29%	1.51%	1.45%	3.89%	-0.18%	0.50%	1.52%	4.30%	-0.11%	18.74%	75.56%
2016	-10.28%	-3.94%	9.06%	-0.40%	0.93%	-2.00%	8.78%	-2.37%	0.02%	-4.48%	3.01%	0.03%	-3.21%	47.85%
2015	-5.32%	4.03%	0.95%	0.02%	1.15%	1.72%	-1.08%	-10.39%	-0.52%	2.88%	-0.09%	-2.51%	-9.57%	52.75%
2014	-3.70%	3.30%	-1.47%	0.49%	2.06%	1.42%	0.22%	1.07%	-2.99%	-0.56%	2.23%	0.48%	2.32%	68.92%
2013	7.21%	3.52%	3.28%	1.22%	4.74%	-1.48%	1.40%	-1.83%	1.21%	2.01%	1.57%	1.79%	27.22%	65.09%
2012	8.86%	2.73%	2.40%	-4.89%	-4.98%	1.87%	3.12%	5.03%	2.42%	1.40%	2.68%	0.80%	22.72%	29.76%
2011										8.45%	-3.97%	1.52%	5.74%	5.74%

* From October 2011 to March 2015 : PFM Dynamic Equity (Cayman). As of 23 March 2015 : Quantis Dynamic Equity (Luxembourg UCITS IV)

ALLOCATION

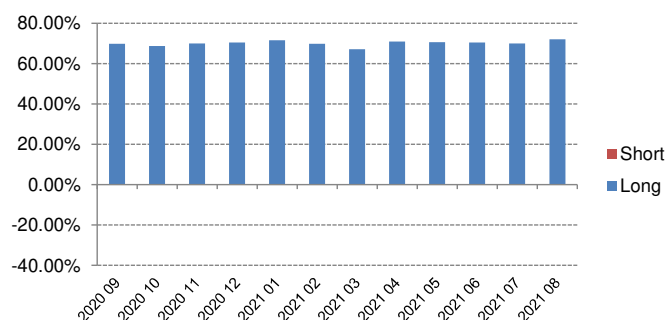


MONTHLY RETURN DISTRIBUTION



TOP EQUITY EXPOSURES (AUGUST 2021)

Long	% NAV	Short	% NAV
Agilent	3.00%	0	0.00%
Mid-America Apart.	2.91%	0	0.00%
Garmin	2.90%	0	0.00%
Dover Corp.	2.82%	0	0.00%
Oracle	2.66%	0	0.00%
	14.30%		0.00%

NET EXPOSURE (EQUITIES) (last 12 months)¹

GMP - QUANTIS DYNAMIC EQUITY - GENERAL INFORMATION

Umbrella	Global Managers Platform (SICAV UCITS V)	Investment management company	Active Niche Funds SA
Domicile	Luxembourg	Advisor	Quantis Asset Management SA
Available currencies	USD / CHF	ManCo	Casa4Funds
Inception date	23 March 2015 (previously under Cayman jurisdiction)	Custodian	ING Luxembourg
Minimum investment	USD 3'000	Administrative & Transfer Agent	CACEIS
Cut-off	Each Thursday 16h00 CET	Auditor	Deloitte
NAV calculation	Weekly (Friday closing)	Management fee	1.60%
ISIN USD class	LU1196382912 (N° de valeur : 27426658)	Performance fee	20% HWM
ISIN CHF class	LU1196383993 (N° de valeur : 27426639)	Subscription fee	Up to 3%
AUM	USD 13.8 M	Redemption fee	None

¹ This is a snap shot of exposures on the last NAV of the month. Equity exposures are market values expressed as a percentage of the Fund's total assets.